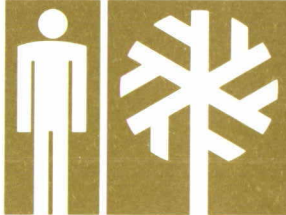


general management plan
summary

D-88A

DELAWARE WATER GAP



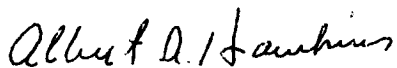
NATIONAL RECREATION AREA / PENNSYLVANIA - NEW JERSEY

RECOMMENDED:



Robert S. Budz
Assistant Manager, Eastern Team, Denver Service Center

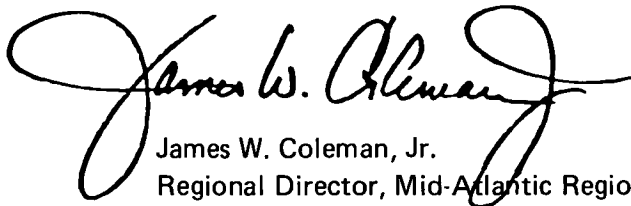
May 1, 1987



Albert A. Hawkins
Superintendent, Delaware Water Gap National Recreation Area

May 8, 1987

APPROVED:



James W. Coleman, Jr.
Regional Director, Mid-Atlantic Region

May 8, 1987

GENERAL MANAGEMENT PLAN SUMMARY

Delaware Water Gap National Recreation Area
Middle Delaware National Scenic and Recreational River
New Jersey and Pennsylvania



United States Department of the Interior / National Park Service



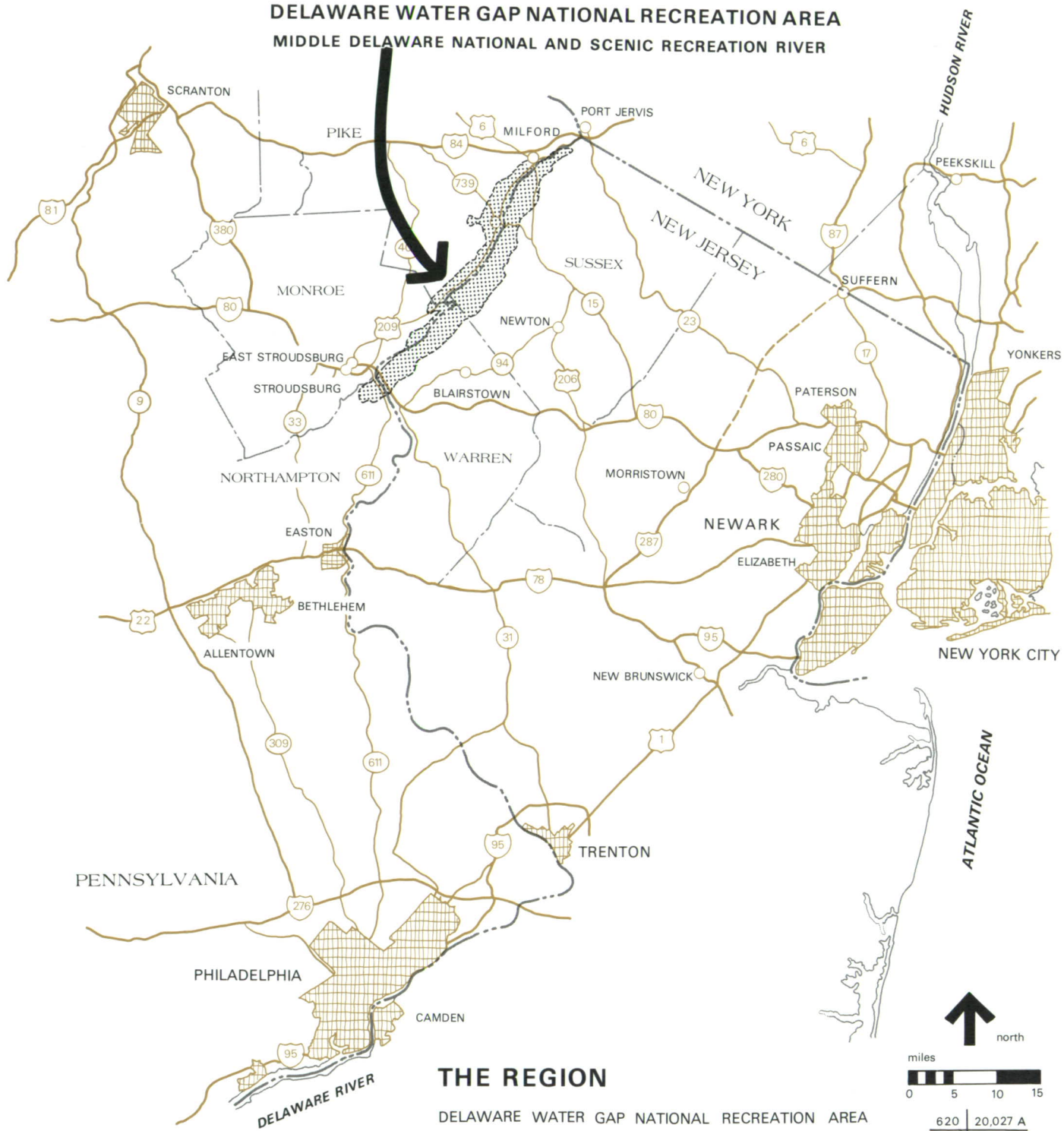
CONTENTS

INTRODUCTION	1
Legislative Mandates	6
Purpose of the Plan	6
Development of the Plan	8
GENERAL MANAGEMENT PLAN	9
Land Protection and Management	9
Land Protection Strategy	9
Management Zoning	9
Resource Management	10
Natural Resources	11
Cultural Resources	12
Scenic Resources	13
Visitor Use	13
Orientation and Information	14
Interpretation	14
Recreational Use	14
Water Activities	14
Driving Tours	15
Trail Use	15
Overnight Use	15
Other Activities	15
General Development	16
Visitor Facilities	16
Access and Circulation	17
Administration and Operations	21
APPENDIX A: LEGISLATION	25
APPENDIX B: MANAGEMENT OBJECTIVES	35
APPENDIX C: SUMMARY OF PUBLIC COMMENTS ON THE DRAFT GENERAL MANAGEMENT PLAN / ENVIRONMENTAL ASSESSMENT	37
APPENDIX D: COST ESTIMATE SUMMARY	43
PLANNING TEAM AND CONSULTANTS	44

MAPS

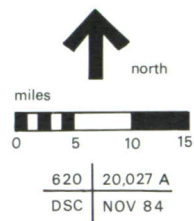
Region	2
General Development	19
Roads	21

**DELAWARE WATER GAP NATIONAL RECREATION AREA
MIDDLE DELAWARE NATIONAL AND SCENIC RECREATION RIVER**



THE REGION

DELAWARE WATER GAP NATIONAL RECREATION AREA
UNITED STATES DEPARTMENT OF THE INTERIOR / NATIONAL PARK SERVICE



ON MICROFILM

INTRODUCTION

Delaware Water Gap National Recreation Area and the Middle Delaware National Scenic and Recreational River have been set aside by Congress for public use and the preservation of scenic, scientific, and historic resources. The free-flowing Delaware River cuts through a narrow valley, and the adjacent lands contain streams and waterfalls, geologic features, a variety of plants and wildlife, and cultural resources. Located near the New York City and Philadelphia metropolitan areas, and easily accessible by private vehicle, the area offers a variety of recreational opportunities. These include hiking, swimming, fishing, hunting, boating, pleasure driving, and sight-seeing; learning about natural and cultural history; and enjoying the solitude of a rural environment and a change of pace.

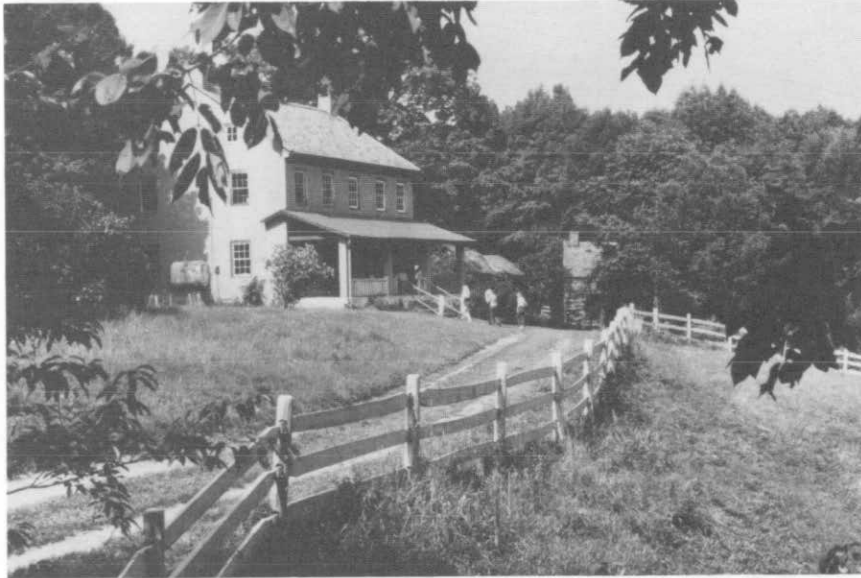
The northern boundary of the national recreation area is 3.5 miles south of Port Jervis, New York, and the southern boundary is about 35 miles downriver, 1.5 miles beyond the geologically significant water gap. Today the federal government owns some 53,542 acres of the 69,629 acres included within the national recreation area boundary.

The General Management Plan will guide the overall management and use of Delaware Water Gap National Recreation Area over the next 10 years, and it will help to ensure the perpetuation of the area's natural and cultural resources and the scenic setting for present and future public enjoyment. The plan will also provide the foundation for subsequent detailed implementation plans, programs, and operations.

This summary of the General Management Plan focuses on the main elements of the approved plan. The full plan is available for review at the headquarters for Delaware Water Gap National Recreation Area in Bushkill, Pennsylvania.

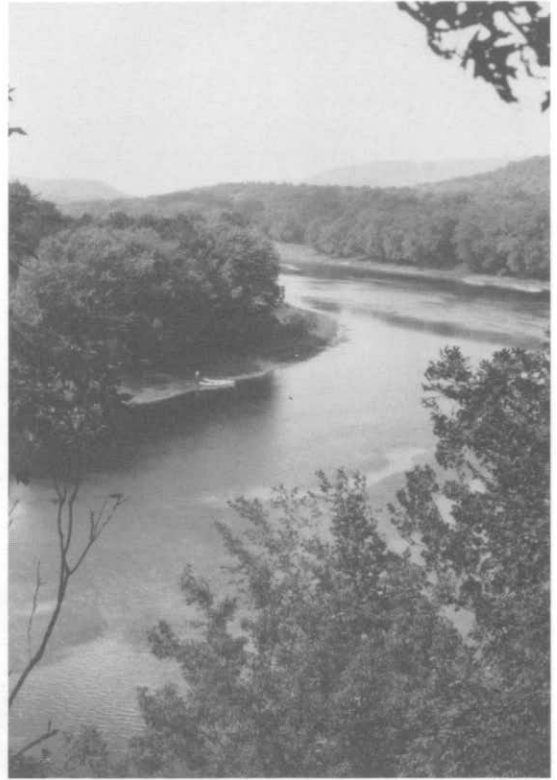


Natural Resources

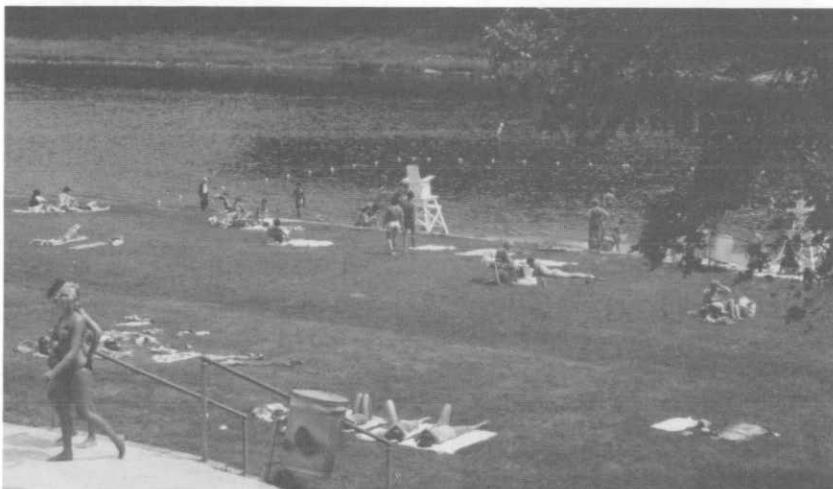


Cultural Resources





Scenic Resources



Recreation Resources

LEGISLATIVE MANDATES

Delaware Water Gap National Recreation Area was originally established to provide "for public outdoor recreation use and enjoyment of the proposed Tocks Island Reservoir and lands adjacent thereto . . . and for the preservation of the scenic, scientific, and historic features contributing to public enjoyment of such lands and waters" (Public Law 89-158). The original legislation assumed that the U.S. Army Corps of Engineers would build and manage the reservoir and that the National Park Service would administer the surrounding recreation area. However, questions about the environmental and economic feasibility of the reservoir have caused the project to be postponed indefinitely. In 1978 all federal lands that had been acquired for the Tocks Island reservoir were transferred from the Corps of Engineers to the National Park Service, and planning proceeded for the development of a national recreation area. Also in 1978 the Delaware River within the recreation area was designated as a scenic and recreational river under the Wild and Scenic Rivers Act. The provisions of that act stipulate that as a scenic and recreational river the Middle Delaware

shall be administered in such manner as to protect and enhance the values which caused it to be included in [the wild and scenic rivers] system without . . . limiting other uses that do not substantially interfere with public use and enjoyment of these values. In such administration primary emphasis shall be given to protect [the area's] esthetic, scenic, historic, archeologic, and scientific features. Management plans . . . may establish varying degrees of intensity for [the area's] protection and development, based on the special attributes of the area.

The Delaware River Basin Commission will reassess the need for the reservoir after the year 2000. If it is decided a reservoir is needed at that time, and if Congress acts to build it, the National Park Service will revise its management strategies accordingly. However, for the life of this plan, the Park Service is committed to managing a free-flowing scenic and recreational river.

PURPOSE OF THE PLAN

The establishing legislation calls for a management plan to be prepared for Delaware Water Gap National Recreation Area that will specifically provide for, in order of priority:

- (1) public outdoor recreation benefits;
- (2) preservation of scenic, scientific, and historic features contributing to public enjoyment;
- (3) such utilization of natural resources as in the judgment of the Secretary of the Interior is consistent with, and does not significantly impair, public recreation and protection of scenic, scientific, and historic features contributing to public enjoyment.

The approved General Management Plan outlines strategies to meet these legislative requirements. It also seeks to achieve management objectives that have been developed for the national recreation area, and it addresses issues and management concerns relating to daily operations. Specifically, the plan addresses the following issues and concerns, which were identified during public scoping sessions for the draft plan:

Conflicts among user groups will be reduced by limiting incompatible uses within the same area (for example, waterskiing and fishing), by dispersing visitor use areas to reduce crowding and traffic congestion, and by providing for a variety of uses in ways that do not infringe on the rights of other visitors (for example, hunting will still be allowed, but safety zones will continue to be designated around visitor use areas).

Efforts will be made to convey better orientation information to visitors so that they know about recreational opportunities, and interpretive programs will be improved to foster an appreciation of natural and cultural resources.

Activities that potentially affect local communities will be coordinated with individual township or county jurisdictions. Cooperative agreements and compensation will ensure adequate services to protect visitors and area resources.

Surveys will continue to be undertaken to identify adverse effects of visitor use on natural resources, and research will continue to be conducted to provide a broader scientific basis for the management of natural resources.

Treatment levels for historic sites within the national recreation area have been determined (for example, which structures should be restored or preserved and which ones should be allowed to deteriorate). A range of structures that collectively illustrate the history of the valley will be preserved, and some of them may be adaptively used for activities that are compatible with the purposes of the recreation area. Archeological sites will be protected from destruction and unauthorized collection.

To maintain the overall scenic landscape, objectives have been established for managing the unique blend of natural, cultural, and scenic features.

Cost-effective facilities have been planned to meet visitor and management needs in the most efficient way possible. Facilities will be judiciously expanded for both water-oriented and land-based activities.

The functions of numerous roads and highways throughout the recreation area have been evaluated. Key entrance points will be designated for visitors to reduce traffic congestion in local communities, and roads that are no longer needed will be closed and returned to a more natural appearance.

DEVELOPMENT OF THE PLAN

The Draft General Management Plan / Environmental Assessment for Delaware Water Gap was released in June 1986. The proposal presented in that document is the basis for the approved General Management Plan, but the actions have been revised to take into account public comments. The range of public comments is summarized in appendix A.

The major changes to the proposed plan include scaling down the level of development (for example, one of the swim beaches has been eliminated, and the size of another beach has been reduced) and limiting the number and size of concession developments. With regard to recreational activities, boat speed limits on the Delaware River were adjusted in certain areas to allow for waterskiing, and backcountry camping will be allowed on a dispersed basis under a permit system instead of requiring backcountry campers to use only designated sites. Additional short trail segments (hiking, bicycling, and bridle trails) will be built to link trails and expand recreational opportunities. For historic resources a wider range of treatment levels are being considered to allow for fuller implementation of the historic property leasing program. Concerns of local residents about increased traffic have been addressed by designating six key entrances to the recreation area, rather than encouraging visitors to use local roads that may not be designed to handle high traffic volumes.

Because the plan has been revised to take into account public comments on the draft plan, and because there are no significant adverse environmental effects associated with implementing the plan, a finding of no significant impact has been signed by the regional director of the Mid-Atlantic Region.

The main elements of the approved plan are summarized in the next section. They include land protection and management, resource management (including natural, cultural, and scenic resources), visitor use, general development, administration and operations. For a more detailed description of proposed actions, see the full General Management Plan.

GENERAL MANAGEMENT PLAN

LAND PROTECTION AND MANAGEMENT

When Congress established Delaware Water Gap National Recreation Area, it included within its boundaries examples of superlative scenery--the renowned water gap, 10 miles of the Kittatinny Mountain ridge, Pennsylvania plateau country behind the mountains, 20 or more small natural lakes and ponds, and several scenic gorges with hemlock forests and beautiful waterfalls. To protect all these features, Congress originally authorized approximately 72,000 acres to be included in the recreation area. Through boundary adjustments since then, the area now contains 69,629 acres, of which nearly 53,542 acres are federally owned. In accordance with the legislation, these lands are to be used for recreation; the preservation of scenic, scientific, and historic resources; and resource utilization as long as the primary values of the national recreation area are not impaired.

Land Protection Strategy

A Land Protection Plan has been prepared to ensure that lands and resources within the recreation area boundary are protected and that suitable lands are available for public use. It analyzes specific protection techniques for all privately owned tracts, with emphasis on techniques other than acquisition (including zoning, exchanges, donations of interests in lands, and cooperative agreements). Zoning will be relied upon unless it cannot provide the necessary degree of protection. Fee acquisition will be pursued only in hardship cases or when it is the sole method to adequately ensure resource protection or to guarantee essential public access to and use of federal lands. Emergency acquisition will take place only when resource destruction is imminent and depending on the availability of funds.

Because the ownership of private lands within the recreation area changes frequently, the Land Protection Plan is updated every two years. For further information about specific recommendations for individual tracts of land, refer to the current Land Protection Plan.

Management Zoning

Management zoning prescribes appropriate uses for all lands within the national recreation area. The zones are based on the inherent nature of the resources, the suitability of lands for use or development, the legislative mandates, and the management objectives for the area. Lands have been assigned to one of four management zones--natural, historic, development, and special use. Each of these zones has been divided into subzones to reflect various management strategies. Acreages for each zone, and the percentage of the recreation area that represents, are shown in table 1.

Table 1: Management Zones

<u>Zone/Subzone</u>	<u>Acres</u>	<u>Percentage of National Recreation Area</u>
Natural Zone		
Outstanding natural features	16,838	24.2
Resource management	38,704	55.6
Historic Zone	1,053	1.5
Development Zone	849	1.2
Special Use Zone		
Nonfederal public land	7,605	10.9
Nonfederal public land with an NPS easement	16	0.1
Quasi-public land	1,329	1.9
Private land	964	1.4
Private land with an NPS easement	<u>2,271</u>	<u>3.3</u>
	69,629	100.0

Approximately 80 percent of the recreation area will be managed under the natural zone classification. Lands within the outstanding natural features subzone include features with high intrinsic or unique values, and the protection of these features will be the primary management goal. Lands in the resource management subzone consist of mature forests, natural areas around lakes and waterfalls, open fields, and farmsteads. The combination of features in this subzone lends to the scenic diversity of the recreation area, and landscape management programs will be undertaken to enhance scenic diversity, wildlife habitat, and natural and man-made systems.

The historic zone includes lands with resources listed on or eligible for the National Register of Historic Places. These lands will be managed to protect and preserve these resources, and interpretation will be provided where appropriate.

All development sites and intensive visitor use areas are included in the development zone. Lands where the National Park Service does not have primary management control are part of the special use zone; the uses of these lands range from public recreation areas to private residences.

RESOURCE MANAGEMENT

The General Management Plan identifies three resource categories that are essential components of the Delaware Water Gap landscape--natural

resources, cultural resources, and scenic resources. Natural resources will be managed to ensure their preservation. Cultural resources will be managed to protect and preserve the broad patterns of human occupation. Scenic resources will be managed to perpetuate the mosaic of color, form, and texture that has resulted from a unique blending of natural and cultural resources within the Delaware Valley.

Natural Resources

The outstanding values of the Delaware River that qualified it for designation as a scenic and recreational river will be preserved. Future visitor use activities and new facilities that could affect water resources will be carefully evaluated. Existing high water quality levels will be monitored and maintained or improved. The National Park Service will continue to consult with the Delaware River Basin Commission and other appropriate federal, state, and local agencies to ensure that its actions enhance water quality and that water pollution is prevented.

Vegetation types vary throughout the national recreation area. Successional and mature forests will be managed to perpetuate native species. However, exotic species will be allowed in historical, recreational, and cultivated open areas, as a reflection of visual and other aspects of past human use.

No plants or animals on the federal endangered or threatened species list have been found to permanently reside within the national recreation area, although the valley is within the range of some species (for example, the peregrine falcon has been sighted during its migration periods, and bald eagles use the valley as winter habitat). The National Park Service will continue to conserve ecosystems that support these species to allow every opportunity for their return.

Fish and wildlife will continue to be managed as a cooperative endeavor with New Jersey and Pennsylvania. Efforts will be made to maintain populations for recreational hunting and fishing, viewing, study, and overall ecological value. Stocking of artificially reared fish and wildlife by state agencies will continue; however, habitat manipulation or development will favor native fish and wildlife species.

There are no mining operations within the recreation area, and there are no proposals for exploration or development. Because mining will impair other resource values, and because it will adversely affect recreation potential and natural and cultural resource preservation, it will not be authorized.

Extensive areas of the national recreation area are within the 100-year and 500-year floodplains of the Delaware River and its tributaries. The need to protect lives and property, and the need to restore and preserve natural and beneficial floodplain values, have been considered for any new development in the floodplains.

Ongoing natural resource research programs will provide a sound basis for management actions and will help prevent significant long-term adverse effects. Specific information about each of the research programs is contained in the "Natural Resource Management Plan" for the recreation area.

Cultural Resources

The goal of cultural resource management will be to ensure that cultural resources are protected when meeting recreation development needs. Archeological sites will be protected from pothunting and vandalism, and vacant significant structures will be protected from deterioration, vandalism, and arson. Interpretive programs will be aimed at making the public more aware of the values of these resources, and patrol and enforcement programs will be intensified. An archeological survey will be done to provide a more complete picture of the prehistory of the area for interpretive and management needs.

Historic structures and sites in the recreation area have been inventoried, and 70 significant sites have been or are being entered on the National Register of Historic Places. A representative spectrum of these properties will be preserved to show how man has adapted to and changed the Delaware Valley landscape. Some historic structures may be adaptively used for activities that are compatible with the purposes of the national recreation area, for example, interpretive or educational functions. Historic structures may also be used by private individuals under special use agreements or the historic property leasing program. Some nonhistoric structures may be removed after they have been evaluated.

Historic structures that have direct interpretive value will be stabilized and restored. For example, Van Campen Inn has been restored and is available for interpretive use. At Millbrook Village interpretation will continue through the use of four historic buildings and other structures that have been moved to the site. Additional structures (for example, a mill) may be moved to the village to enhance the interpretive themes.

Cultural landscapes will be retained by keeping vegetation and agricultural use patterns near historic structures. Outbuildings, farm support structures, and fence rows will be kept wherever possible to maintain farmsteads and existing landscape configurations. The landscape as a whole, as well as individual features, will be evaluated to determine if it is eligible for nomination to the National Register as a rural historic district. The Old Mine Road will be used for interpretation of historic development and growth of the area and for recreational purposes such as hiking and scenic driving.

Uses of existing, privately owned cultural resources that are compatible with the purposes of the recreation area will be allowed to continue. The National Park Service may seek to buy an easement from the owners to protect a site or a structure's facade and its immediate surroundings, outbuildings, and vegetation. Significant properties may be acquired.

Scenic Resources

The Delaware Water Gap landscape consists of mature forests, rolling hills of successional forests, open valley lowlands, lakes, and the Delaware River and its tributaries. The scene that appears today is the result of more than 200 years of human use, including farming and logging. However, many of these uses have now ceased, and if some active landscape management is not undertaken, then much of the area will eventually return to mature forest, with the resulting loss of the scenic and historical mix of open land and forest.

Some change in the landscape will be inevitable over the long term, but a landscape management program will be implemented so that the change is incremental rather than radical. The program will only apply to lands in the resource management subzone (approximately 56 percent of the recreation area). The mix of vegetation in this subzone will be managed to maintain approximately 20 percent open land, 40 percent productive forest, and 40 percent maturing forest. Management techniques will include farming and tree cutting.

A landscape management plan will be prepared to identify specific strategies and management techniques for individual tracts of land. It will also identify rural historic districts and locations for scenic vistas. Preliminary recommendations are that all existing open areas remain open and that additional lands that used to be open in the last 20 years or so be returned to that appearance. Forested areas will be further analyzed to determine which areas should be cut or allowed to mature.

VISITOR USE

The goal for visitor use at Delaware Water Gap National Recreation Area will be to provide the widest possible range of recreational opportunities without allowing natural or cultural resources to be degraded as a result. Activities will be dispersed throughout the national recreation area to minimize conflicts between user groups. People will have a chance to appreciate the aesthetic, educational, and inspirational qualities of the resources, as well as enjoy themselves. Opportunities for hunting and fishing will continue. NPS programs will be aimed at both individuals and groups. Programs will also be designed to address the needs of non-English-speaking visitors and individuals with physical or mental limitations, thus ensuring that all visitors have an opportunity to enjoy the recreation area.

No fees will be charged for public recreational activities except in the case of some group activities, cultural events, or certain special recreation services and facilities. Projected visitation for 1996 could range between 5.0 million and 6.9 million visits.

Orientation and Information

Orientation and information programs will tell visitors what opportunities are available so that they can make the best use of their time. Recreational activities, related information, and overnight accommodations will be described. Facilities, brochures, and personnel will be strategically placed to provide this information, and visitors will be directed to these locations from the recreation area's key entrance points (see the General Development map).

Interpretation

The goal of interpretation will be to foster a public understanding and appreciation of the natural and cultural processes that have shaped and are continuing to shape the Delaware Valley landscape. Natural history themes will focus on the formation of the landscape, and plant and animal communities will also be highlighted. Cultural history themes will encompass the human history of the area--its original inhabitants, their communities, how they used the valley, the arrival of European settlers, and the various phases of development in the valley. Overall, the interpretive program will give an overview of a particular regional American way of life and show how events in the Delaware Valley have reflected national attitudes about environmental conservation, the preservation of cultural traditions, and recreation/leisure trends.

Recreational Use

The National Park Service will encourage the widest possible range of appropriate recreational activities--from fishing and hunting, to hiking and bicycling, to scenic driving tours and crafts fairs.

Water Activities. The Delaware River will continue to be the focus of most recreational activities, including canoeing, tubing, fishing, motorboating, and swimming. To reduce conflicts on the river, seasonal speed limits will be established for motorboats. From April through September (the peak use period) a 10-mph speed limit will be enforced for the entire river. However, to allow for waterskiing, a 35-mph speed limit will be allowed at the Prices Landing pool year-round and at the Smithfield pool from late May through September. From October through March a 35-mph speed limit will be enforced for the entire river. Specific dates for enforcing speed limits may be adjusted slightly because of fishing seasons or water conditions, and the effective dates will be announced. Motorboats will not be permitted on upland lakes.

River swimming areas with lifeguards will be continued at Milford and Smithfield, and a new beach will be developed at Sandyston. Protected swimming will be available at Long Pine Lake, if facilities are developed and as long as water quality is maintained.

Driving Tours. Sight-seeing and pleasure driving will continue to be popular activities throughout the year, especially in spring and fall. Driving tours will be developed through Flatbrook Valley, along Old Mine Road, on Pennsylvania Highway 611, and on US 209. The tour routes will be shown on park maps, and road signs will be posted to mark the routes; interpretive brochures and wayside exhibits will also be provided.

Trail Use. Trails will offer visitors day and overnight hiking opportunities, along with new perspectives on natural and cultural resources. The Appalachian National Scenic Trail will continue to be a primary resource for hikers. This trail is open only to hiking, and vehicular access has been limited in the vicinity of the trail. Trails for bicycling, horseback-riding, and snowmobiling, as well as hiking, will also be developed (see General Development map), and clubs and organizations will be sought to help develop and maintain the trails.

Overnight Use. Camping has long been a traditional use in the Delaware Valley. To meet increasing needs for various overnight experiences, three types of camping opportunities will be provided--developed camping (which means that water and comfort facilities will be provided), primitive backcountry camping (no water or comfort facilities), and group camping.

Commercial campgrounds near the recreation area accommodate much of the demand for developed camping, but some additional facilities are needed in the recreation area to complement the broad range of day activities. NPS concessioners will offer developed camping at Dingmans, the Kettle Holes, and Long Pine Lake. Such facilities will be limited in size to avoid direct competition with private or nonfederal camping developments outside the recreation area.

Backcountry camping provides opportunities for hikers and canoeists to experience areas that are more remote than heavily visited sites and developed campgrounds. A permit system will help disperse use and prevent overuse of particularly fragile areas. No backcountry camping areas will be designated.

Other overnight uses now accommodated at environmental education centers and the youth hostel on Old Mine Road will be continued. Commercial lodging operations may be developed at Long Pine Lake and Walpack Center if they are shown to be feasible. It is also possible that bed-and-breakfast facilities could be provided in historic structures.

Other Activities. Picnic facilities will be provided at most activity areas. Playfields will be developed for organized sports as well as informal games. Outdoor recreational activities that are not customary or traditional park uses will be allowed on a case-by-case basis. Generally, these activities should not interfere with more traditional uses, compromise historic or natural scenes, or present a danger to public safety.

GENERAL DEVELOPMENT

Delaware Water Gap National Recreation Area is currently not highly developed. Existing facilities consist largely of adaptively used buildings that were in place before the recreation area was established. The headquarters building and associated maintenance facility in Bushkill, plus several comfort stations throughout the recreation area, are the only buildings designed and constructed by the National Park Service to date.

Overall, 85 percent of the visitor use sites are currently used for recreational activities, and the purpose of most of the development actions will be to improve facilities at existing areas. The other 15 percent of the sites are new areas where facilities will be developed. A summary of development costs is included as appendix B.

Visitor Facilities

The goal of the General Management Plan will be to ensure that development serves the needs of visitors efficiently and in a manner that complements the natural, cultural, and scenic attributes of the region. Facilities will be dispersed throughout the recreation area and will include developed river accesses, swim beaches, picnic grounds and playfields, campgrounds, interpretive and information centers, and a road and trail system (see the General Development map).

River accesses will include motorboat ramps, fishing boat/canoe launches, and canoe put-ins. Accesses will be staggered along both sides of the river to reduce visual intrusion and congestion. Boat ramps or launches will be provided every 5-7 miles; canoe put-ins will be spaced approximately every 1.5 miles, with informal put-ins allowed in central New Jersey south of Dingmans Ferry Bridge.

Most day recreation sites will have facilities for multiple uses. Ten sites will be developed for extensive public use, with facilities for picnicking, boat launching, and playing. Existing facilities (for example, Smithfield Beach, Hidden Lake, and Milford Beach) will be improved. Development at sites such as Sandyston Beach and Millville will be new.

Less extensive facilities will be provided at 17 sites (including Toms Creek, Van Campens Glen, and Loch Lomond). Existing activities at most of these sites will be continued in much the same style as present.

No development is planned in the large, undeveloped areas between Raymondskill and Dingmans Falls. These outstanding natural areas offer opportunities for visitors to experience a pristine environment.

Most of the additional camping facilities will be provided at developed campgrounds, which will be operated by private concessioners; fees will be commensurate with those charged at nearby private campgrounds. Four designated camping areas along the riverbanks will be provided for canoeists. Canoeists will also be able to use numerous islands for

primitive camping. Organized group campsites will be available on a reservation basis at Hidden Lake and Rivers Bend and for canoeists at Valley View. Primitive backcountry camping will be allowed under a permit system that will disperse use.

A trail network will be developed to link all parts of the recreation area. Connecting and through-trails for day hiking will help reduce crowding on the Appalachian Trail. Bridle trail loops will be of varying lengths and will offer opportunities for all skill levels of users. Bicycle trails will be developed along the river in Pennsylvania and New Jersey and in scenic areas. Any marked trails may be used as cross-country ski trails during the winter, and parking areas will be plowed to indicate which trails are recommended. Snowmobiling is allowed on any seasonally closed automobile road throughout the park, as well as on the existing snowmobile trail in Pennsylvania.

As with any planned development, site-specific design and construction constraints will be considered when the trails are laid out. The trails will be designed to provide for enjoyment of the area's resources while ensuring the protection and preservation of natural features and endangered species.

Concession operations will help meet projected visitor demands and provide for diversified recreational opportunities. None of the operations should directly compete with commercial activities outside the national recreation area, and economic feasibility studies and detailed market analyses will be done before any individual concession contracts are issued.

Access and Circulation

Private automobiles will continue to be the primary means for visitor access to the national recreation area and circulation within it. Key entrance points from the major regional access roads will be identified with signs and orientation information. This will help divert use from local roads, which are not always designed to handle high traffic volumes. The National Park Service will work with the New Jersey and Pennsylvania Departments of Transportation and local governments to define the appropriate routes into the recreation area from major highways. Key entrance points in New Jersey will be near the intersection of River Road and I-80, off US 206 near Layton and Dingmans Ferry, and near the US 206 bridge in Montague. In Pennsylvania entrances will be at River Road near Shawnee, on US 209 south of Bushkill, and on US 209 south of Milford.

Within the recreation area access will be provided to all facilities and resources, with a minimum mileage of roads. Primary links across the Delaware River will continue to be I-80 in the south, Dingmans Ferry Bridge in the middle, and US 206 in the north. In New Jersey primary routes for north-south circulation will be the New Jersey River Road, Old Mine Road, and Flatbrook Valley Road; east-west spurs such as the

GENERAL DEVELOPMENT

NEW DEVELOPMENT

PENNSYLVANIA

- 1

SLATEFORD FARM
Preserve and interpret historic buildings
Upgrade and expand 12-car parking area to 40 cars/4 buses
Continue commercial tour bus stop
Replace 2 portable toilets with 5 toilet facilities
Construct 25 picnic sites
Upgrade water system
- 2

DUCK POND
Maintain 10-car/1-bus parking area
- 3

ARROW ISLAND
Maintain scenic overlook and 20-car parking area
Continue commercial tour bus stop
- 4

MINSI HANG-GLIDING LAUNCH SITE
Maintain 5-car parking area and open field
- 5

POINT OF GAP
Maintain scenic overlook and 75-car/5-bus parking area
Continue commercial tour bus stop
Replace 1 portable toilet with 4 toilet facilities
Construct fishing boat/canoe launch
- 6

RESORT POINT
Maintain scenic overlook and 21-car parking area
Continue commercial tour bus stop
- 7

PENNSYLVANIA WELCOME CENTER
Continue state-operated visitor information center
- 8

SHAWNEE
Continue privately operated resort, golf course, swim beach, and canoe and tube launch/takeout
- 9

HIALEAH NRA ENTRANCE (River Road)
Construct 5-car pullout; provide visitor information
- 10

HIALEAH PICNIC AREA
Upgrade and expand 33-site picnic area to 45 sites
Expand 45-car/1-bus parking area to 50 cars/1 bus
Add 2 additional toilet facilities — 4 total
Upgrade access and circulation roads
- 11

SMITHFIELD
Retain swim beach, open playfield, 325-car/5-bus parking area, and beachhouse with 4 toilet facilities
Provide concession food service
Upgrade and expand 15-site picnic area to 50 sites
Construct new motorboat ramp
Convert motorboat ramp to fishing boat/canoe launch and close existing launch
Replace portable toilets with 4 toilet facilities
Upgrade access and circulation
- 12

HIALEAH AIRPARK
Maintain open playfield and 10-car parking area
- 13

FERRY LANDING
Construct 10-site picnic area, 25-car parking area, ferryboat landing, and 1 toilet facility (concession)
Upgrade access and circulation
- 14

HIDDEN LAKE
Maintain open playfield, 80-car/2-bus parking area, swim beach, employee house, and 10 picnic sites; construct 6 toilet facilities and storage area; provide concession food service
Expand group campsite to 2 sites (40 persons/site); provide 4 toilet facilities
Rehabilitate lodge and barn; install utilities
Upgrade canoe put-in
- 15

NRA HEADQUARTERS
Make lower floor handicap accessible
Continue use of Pennsylvania maintenance facility
Maintain 30-car parking area
- 16

SAND HILL NRA ENTRANCE (US 209 South)
Construct visitor contact station (with 3 toilet facilities) and 40-car parking area
- 17

MILLER-HAGEN
Construct canoe put-in, 25-car parking area, 10 picnic sites, picnic shelter, playfield, and 2 toilet facilities
- 18

COLD SPRING
Construct canoe put-in and 5-car parking area
- 19

BUSHKILL
Preserve historic structures
Continue privately operated commercial activities
Continue use of Bushkill schoolhouse as river district ranger/naturalist station
- 20

BUSHKILL ACCESS
Relocate fishing boat/canoe launch
Relocate 15-car parking area and expand to 30 cars/boat trailers
Upgrade entrance road
Construct 2 toilet facilities
- 21

VALLEY VIEW
Upgrade and expand 5 canoe campsites (8 persons/site) to 20 sites and 2 canoe group campsites (25 persons/site)
Construct 7 toilet facilities
- 22

TOMS CREEK PICNIC AREA
Maintain 7 picnic sites and expand 10-car parking area to 35-car trailhead parking
- 23

STUCKI POND
Construct 15 picnic sites, 20-car parking area, and 1 toilet facility
- 24

ESHBACK
Construct picnic shelter, 50 picnic sites, and open playfield; expand 15-car parking area to 75 cars
Improve canoe put-in
Replace 2 portable toilets with 4 toilet facilities
Upgrade entrance road
- 25

POCONO ACCESS
Upgrade canoe put-in to fishing boat/canoe launch
Construct 15-car/boat trailer parking area
Install 1 toilet facility
- 26

POCONO ENVIRONMENTAL EDUCATION CENTER
Continue privately operated center with open playfield, 15 picnic sites, 50-car/3-bus parking area, and lodging for 250 people
Upgrade roads
- 27

SHAPNACK ACCESS
Maintain canoe put-in and 1 Clivus Multrum toilet facility
Construct 10-car parking area
- 28

HORNBECK
Upgrade and expand 20 canoe campsites to 25 sites (4 persons/site)
Replace Clivus Multrum toilet with 4 toilet facilities
- 29

HORNBECK CREEK ACCESS
Construct 1 canoe put-in and 10-car parking area
- 30

LOCH LOMOND
Maintain 10 picnic sites and 20-car parking area for trailhead
Replace portable toilet with 1 toilet facility
- 31

CHILDS PICNIC AREA
Reduce 130-site picnic area to 100 sites and 150-car parking area to 100 cars/2 buses
Replace 3 vault toilets with 10 toilet facilities
Rehabilitate 2 picnic shelters and hiking trails
- 32

DINGMANS FALLS
Remodel interior of interpretive center
Upgrade 60-car/3-bus parking area, hiking trail, and bridges
Retain 6 picnic sites, employee house, and comfort station (6 toilet facilities)
Relocate leachfield and remove portable toilet

- 33

DINGMANS CAMPGROUND
Continue concessioner-operated campground (no seasonal campsites)
Upgrade 108 campsites, 2 bathhouses, 2 comfort stations (10 toilet facilities), trailer dump station, open playfield, and fishing boat/canoe launch
Construct picnic pavilion
- 34

PENNSYLVANIA DISTRICT OFFICE
Relocate north district maintenance activity to Zimmerman farm
Remodel interior of district ranger station
Upgrade 10-car parking area and entrance road
Construct firing range (Skys Edge)
- 35

DINGMANS LAUNCH
Construct 3 fishing boat/canoe launches; upgrade canoe put-in and entrance road
Expand 110-car/boat trailer parking area to 150 cars/boat trailers
Replace 2 vault toilets with 10 toilet facilities
Retain 10 picnic sites
Provide visitor information
- 36

DRY BROOK
Construct canoe put-in, 15-car parking area, and 1 toilet facility
- 37

ZIMMERMAN FARM
Develop Pennsylvania satellite maintenance facility
- 38

RAYMONDSKILL FALLS
Retain 20-car parking area for trailhead use, 1 comfort station, and 3 picnic sites
Upgrade hiking trails
- 39

SHANNA HOUSE
Rehabilitate leased/concession-operated restaurant
Upgrade and expand 10-car parking area to 50 cars
Upgrade utilities
- 40

INDIAN POINT
Construct canoe put-in and 10-car parking area
- 41

TOCKS AIRPARK
Maintain open playfield; improve 20-car parking area
- 42

CLIFFPARK
Continue privately operated golf course
- 43

FECHTER POND
Construct entrance road, open playfield, 20 picnic sites, 30-car parking area, and 2 toilet facilities
- 44

LAPAWANSA NRA ENTRANCE (US 209 North)
Construct visitor contact station (with 3 toilet facilities) and 40-car parking area
- 45

MILFORD BEACH
Maintain open playfield, swim beach, picnic shelter, and employee house
Provide concession food service
Upgrade and expand 20-site picnic area to 200 sites, and 100-car/6-bus parking area to 500 cars/boat trailers and 10 buses
Convert motorboat ramps to 2 fishing boat/canoe launches
Replace comfort station with 10 toilet facilities; construct beachhouse with 10 toilet facilities; and remove 4 portable toilets
Relocate entrance road
- 46

ROBERTS LANE
Construct canoe put-in and 5-car parking area
- 47

PEIRCE HOUSE
Develop interpretive/education/research center
Upgrade 2-car parking area to 8 cars
Maintain quarters for 1 employee
Upgrade water and septic systems

NEW JERSEY

- 48

WEYGADT
Construct visitor contact station (with 12 toilet facilities) and 125-car/10-bus parking area
Provide 25 picnic sites
Upgrade utilities
Redevelop New Jersey satellite maintenance area
Replace and expand ranger station; replace employee house
- 49

NEW JERSEY REST AREA
Continue state-operated truck pullout
- 50

KITTATINNY POINT
Maintain scenic overlook and 100-car/5-bus parking area
Remodel visitor contact station as picnic shelter, with 10 toilet facilities
Upgrade and expand 20-site picnic area to 50 sites; construct additional picnic shelter (2 total) and 4 toilet facilities; remove 2 portable toilets
Upgrade 2 fishing boat/canoe launches; construct 75-car/boat trailer parking area and access road
- 51

DUNFIELD CREEK
Maintain trailhead parking for 50 cars/2 buses
Construct 6 toilet facilities
- 52

WORTHINGTON STATE FOREST
Continue use of 80 campsites, amphitheater, and fishing boat/canoe launch (state operated)
- 53

COPPER MINE INN
Rehabilitate leased/concession-operated restaurant
Construct canoe put-in and 2 toilet facilities
Upgrade 50-car/boat trailer parking area, entrance road, and utilities
- 54

DIMMICKS LAUNCH
Upgrade access and construct canoe put-in, ferryboat landing, and 25-car parking area (concession)
- 55

PAHAQUARRY COPPER MINES
Upgrade and expand 12-car parking area to 25 cars; maintain 3-bus parking area
Install 3 toilet facilities
- 56

POXONO
Maintain fishing boat/canoe launch and 6-car/boat trailer parking area
Replace portable toilets with 1 toilet facility
- 57

DEPEW RECREATION SITE
Maintain open playfield and fishing boat/canoe launch
Construct 6 toilet facilities and picnic shelter
Upgrade and expand 12-site picnic area to 50 sites and 20-car parking area to 75 cars/2 buses
Upgrade access and circulation roads
- 58

MOHICAN OUTDOOR RESOURCE CENTER
Continue privately operated camp, lodging, 45-car/2-bus parking area, and comfort station
Upgrade access road
- 59

VAN CAMPENS GLEN
Lower Area: Upgrade and expand 6-site picnic area to 15 sites and 10-car parking area to 25 cars; replace portable toilet with 3 toilet facilities
Upper Area: Relocate 12-car parking area; rehabilitate entrance road
- 60

HAMILTON
Upgrade and expand 14 canoe campsites (6 persons/site) to 30 sites
Install 4 additional toilet facilities — 6 total

- 61

WATERGATE
Maintain open-air concert area (capacity 250)
Upgrade and expand 12-site picnic area to 50 sites and 30-car parking area to 100 cars/3 buses
Replace 4 portable toilets with 10 toilet facilities
Provide concession food service
- 62

MILLBROOK VILLAGE
Maintain living history complex; incorporate additional structures as appropriate
Construct visitor information contact point, cooperative association food service and gift sales, and central water and septic systems
Maintain 6 picnic sites
Relocate 25-car/2-bus parking area and expand to 100 cars/2 buses
Replace 4 portable toilets with 8 toilet facilities
Relocate employee quarters to Van Campen house
- 63

RIVERS BEND
Maintain 5 group campsites (40 persons/site), open playfield, and canoe put-in
Develop 10-car/10-bus parking area
Replace vault toilets with 10 toilet facilities
Construct amphitheater
Upgrade access road
- 64

STEVENS POINT
Construct canoe put-in and 5-car parking area
- 65

PETERS
Upgrade and expand 18 canoe campsites (6 persons/site) to 35 sites
Install 6 additional toilet facilities — 7 total
- 66

SMITH FERRY
Construct canoe put-in and 5-car parking area
- 67

BUCK
Construct fishing boat/canoe launch, 10-car/boat trailer parking area, and 1 toilet facility
- 68

BLUE MOUNTAIN LAKES
Construct 20 picnic sites, 30-car parking area, and 2 toilet facilities,
- 69

LONG PINE LAKE
Develop concession-operated overnight lodging and 250 campsites, with food service, 100 picnic sites, swim beach, and 300-car/3-bus parking area
Rehabilitate structures and upgrade utilities
- 70

CRATER LAKE
Replace 10-car parking area with trailhead parking
- 71

FORT JOHN
Upgrade canoe put-in to fishing boat/canoe launch
Upgrade and expand 5-car parking area to 20 cars/boat trailers
Construct 1 toilet facility
- 72

SHADOW FARM
Develop privately operated equestrian center
- 73

FLATBROOK VALLEY OVERLOOK
Construct 10-car parking area
- 74

BUTTERMILK FALLS
Upgrade and expand 15-car parking area to 25 cars
Provide 5 picnic sites and 1 toilet facility
Upgrade access road
- 75

WALPACK INN
Continue privately operated restaurant
- 76

NEW JERSEY DISTRICT OFFICE
Remodel interior of Jacob Roe house
Establish visitor contact point
Upgrade parking

- 77

WALPACK VALLEY ENVIRONMENTAL EDUCATION CENTER
Continue privately operated center
Upgrade access and circulation roads
Expand parking area to accommodate 3 buses
Upgrade water and sewer systems
- 78

WALPACK CENTER
Maintain village for privately operated lodging/commercial use
Retain 1 employee house and post office
- 79

THUNDER MOUNTAIN
Remove 6 structures
Provide 50 picnic sites, 75-car parking area, open playfield, and 6 toilet facilities
Upgrade access road
- 80

PETERS VALLEY
Continue privately operated craft village/commercial use
Maintain visitor contact station, crafts store, and 6 picnic sites
Upgrade and expand 40-car/2-bus parking area to 85 cars/2 buses
Replace 4 portable toilets with 6 toilet facilities
Construct central water and sewer systems and storage
Improve and expand pedestrian access system
- 81

SANDYSTON BEACH
Construct swim beach, beachhouse with 6 toilet facilities, comfort station with 4 toilet facilities, 200-car/3-bus parking area, 100 picnic sites, open playfield, and canoe put-in; install utilities
Develop New Jersey maintenance facility and 1 employee house
- 82

KETTLE HOLES CAMPGROUND
Develop concession-operated campground (100 campsites) and 6 toilet facilities
- 83

SANDYSTON CANOE CAMPSITES
Expand 8 canoe campsites (4 persons/site) to 10 canoe campsites
Install 1 additional toilet facility — 2 total
- 84

SUSSEX POND
Continue privately operated playfield and portable toilet
- 85

NAMANOCK
Construct fishing boat/canoe launch, 15-car/boat trailer parking area, and 1 toilet facility
- 86

OLD MINE ROAD YOUTH HOSTEL
Maintain youth hostel
Upgrade entrance road
- 87

MINISINK
Construct canoe put-in and 5-car parking area
- 88

WHITE BROOK
Construct canoe put-in and 5-car parking area
Upgrade entrance road
- 89

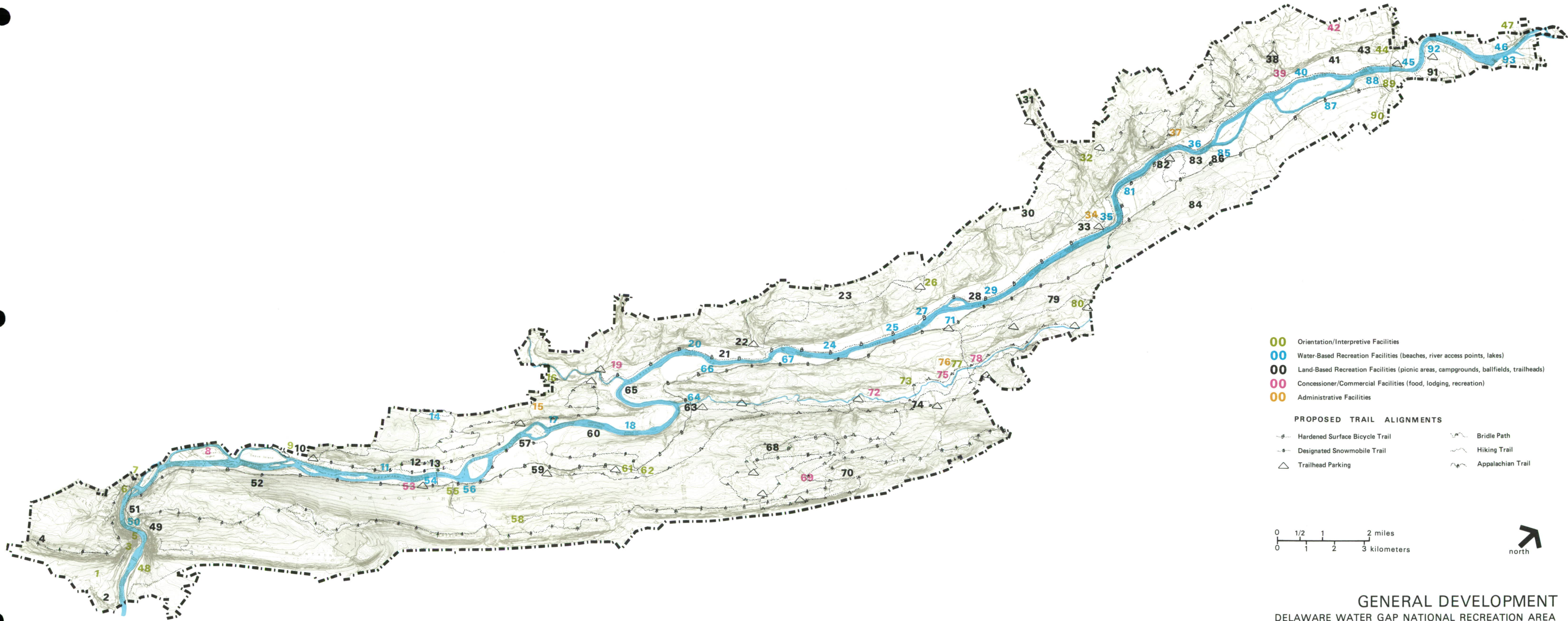
US 206 NRA ENTRANCE
Construct visitor contact/information kiosk
- 90

NELDON-ROBERTS SCHOOLHOUSE
Maintain visitor contact station (by others)
Upgrade and expand parking area to 20 cars
- 91

MILLVILLE
Construct 25 picnic sites, open playfield, 40-car parking area, and 3 toilet facilities
- 92

MILLVILLE ACCESS
Construct fishing boat/canoe launch, 10-car parking area, and 1 toilet facility
- 93

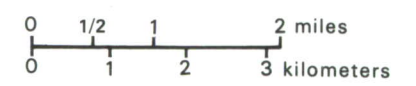
QUICKS ISLAND ACCESS
Construct canoe put-in and 5-car parking area



- 00** Orientation/Interpretive Facilities
- 00** Water-Based Recreation Facilities (beaches, river access points, lakes)
- 00** Land-Based Recreation Facilities (picnic areas, campgrounds, ballfields, trailheads)
- 00** Concessioner/Commercial Facilities (food, lodging, recreation)
- 00** Administrative Facilities

PROPOSED TRAIL ALIGNMENTS

- | | |
|--------------------------------|-------------------|
| Hardened Surface Bicycle Trail | Bridle Path |
| Designated Snowmobile Trail | Hiking Trail |
| Trailhead Parking | Appalachian Trail |

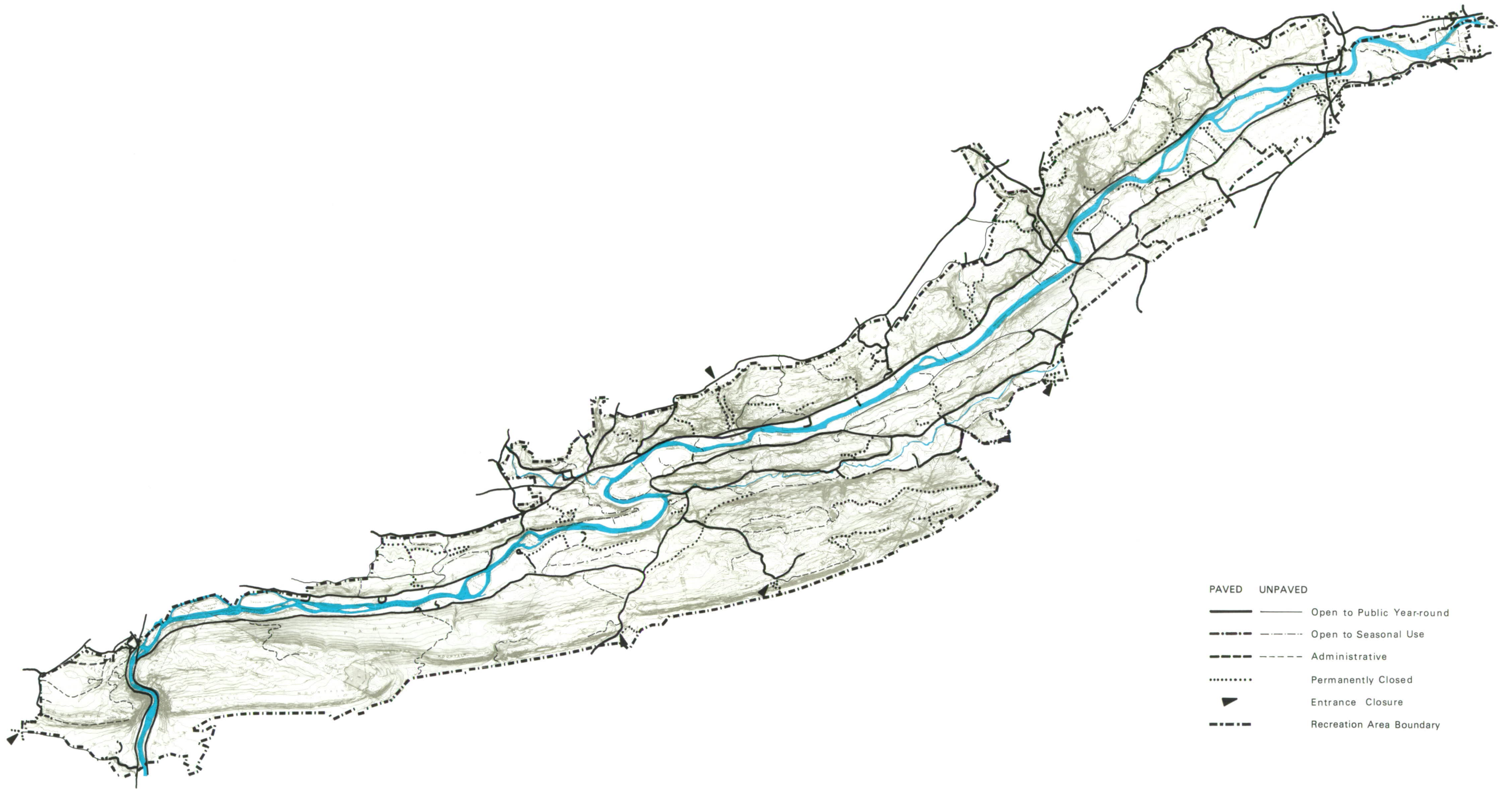


GENERAL DEVELOPMENT
DELAWARE WATER GAP NATIONAL RECREATION AREA
UNITED STATES DEPARTMENT OF THE INTERIOR / NATIONAL PARK SERVICE

Filmed as
620/20033C

ON MICROFILM

626 | 20033C
DSC | FEB 87



- | PAVED | UNPAVED | |
|-------|---------|---------------------------|
| | | Open to Public Year-round |
| | | Open to Seasonal Use |
| | | Administrative |
| | | Permanently Closed |
| | | Entrance Closure |
| | | Recreation Area Boundary |

0 1/2 1 2 Miles
0 1 2 3 Kilometers



ROADS

DELAWARE WATER GAP NATIONAL RECREATION AREA
UNITED STATES DEPARTMENT OF THE INTERIOR / NATIONAL PARK SERVICE

620 | 20038B
DSC | FEB 87

ON MICROFILM

Millbrook/Blairstown Road, the Flatbrookville/Stillwater Road, and numerous other connectors will continue to provide access to various facilities and features. In Pennsylvania primary routes for north-south circulation will continue to be US 209, River Road, and in places the Old Milford Road (PA 51001); primary east-west links will be the Buck and Doe Road, Briscoe Mountain Road, PA 611, PA 739, Silver Lake Road, and Raymondskill Road.

Seasonal road uses, such as hunting, fishing access, bicycling, and cross-country skiing, will be allowed to the greatest extent possible. Designated parking spaces along the roads will be developed to accommodate dispersed use patterns.

The National Park Service will continue to maintain roads scheduled to remain open under its jurisdiction. Slightly over 250 miles of road will be open for public use, and approximately 215 miles will be maintained year-round (125 miles in Pennsylvania and 90 in New Jersey). Twelve miles of road in Pennsylvania and nearly 25 miles in New Jersey will not be open during the winter. Approximately 50 miles of road will be used only for administrative purposes (25 miles in Pennsylvania and over 20 miles in New Jersey). Approximately 60 miles of road will be permanently closed (40 miles in Pennsylvania and 22 miles in New Jersey). Of the more than 30 access points to the national recreation area, seven will be closed (three in Pennsylvania and four in New Jersey).

A local government may obtain a right-of-way permit to use an NPS-managed road that is to be closed if its continued local use will not conflict with recreation area uses and if the local government agrees to provide for maintenance and administration.

ADMINISTRATION AND OPERATIONS

Administration and operations at Delaware Water Gap will help ensure that management activities are efficient and cost-effective in providing for the protection of natural and cultural resources, visitor needs, and the safety of visitors and employees alike. NPS managers will cooperate with other federal agencies, state and local governments, and private groups to make certain that land uses, recreational opportunities, and historic preservation efforts are beneficial to the region, the recreation area, and the public in general. The National Park Service will continue to participate in public forums, as well as informal and formal planning efforts, to help coordinate future management plans for the region.

Increased visitation to the national recreation area may cause greater burdens on local governments if they are called upon to provide emergency and other services. Under cooperative agreements local fire departments will be reimbursed for costs to respond to fires in the recreation area. Local ambulance and rescue services are encouraged to recover costs directly from the user's health insurance program. Many NPS staff will continue to be trained in law enforcement and emergency medical procedures to assist local authorities, if needed. Road system problems and traffic congestion related to greater visitation will be addressed jointly by the National Park Service and local governments.



APPENDIX A: LEGISLATION

Public Law 87-328

September 27, 1961
[H. J. Res. 225]

JOINT RESOLUTION

To create a regional agency by intergovernmental compact for the planning, conservation, utilization, development, management, and control of the water and related natural resources of the Delaware River Basin, for the improvement of navigation, reduction of flood damage, regulation of water quality, control of pollution, development of water supply, hydroelectric energy, fish and wildlife habitat, and public recreational facilities, and other purposes, and defining the functions, powers, and duties of such agency.

Resolved by the Senate and House of Representatives of the United States of America in Congress assembled,

PART I

COMPACT

Delaware River
Basin Compact.

Whereas the signatory parties recognize the water and related resources of the Delaware River Basin as regional assets vested with local, State, and National interests, for which they have a joint responsibility; and

Whereas the conservation, utilization, development, management, and control of the water and related resources of the Delaware River Basin under a comprehensive multipurpose plan will bring the greatest benefits and produce the most efficient service in the public welfare; and

Whereas such a comprehensive plan administered by a basinwide agency will provide effective flood damage reduction; conservation and development of ground and surface water supply for municipal, industrial, and agricultural uses; development of recreational facilities in relation to reservoirs, lakes, and streams; propagation of fish and game; promotion of related forestry, soil conservation, and watershed projects; protection and aid to fisheries dependent upon water resources; development of hydroelectric power potentialities; improved navigation; control of the movement of salt water; abatement and control of stream pollution; and regulation of stream flows toward the attainment of these goals; and

Whereas decisions of the United States Supreme Court relating to the waters of the basin have confirmed the interstate regional character of the water resources of the Delaware River Basin, and the United States Corps of Engineers has in a prior report on the Delaware River Basin (House Document 179, Seventy-third Congress, second session) officially recognized the need for an interstate agency and the economies that can result from unified development and control of the water resources of the basin; and

Whereas the water resources of the basin are presently subject to the duplicating, overlapping, and uncoordinated administration of some forty-three State agencies, fourteen interstate agencies, and nineteen Federal agencies which exercise a multiplicity of powers and duties resulting in a splintering of authority and responsibilities; and

Whereas the joint advisory body known as the Interstate Commission on the Delaware River Basin (INCODEL), created by the respective commissions or Committee on Interstate Cooperation of the States of Delaware, New Jersey, New York, and Pennsylvania, has on the basis of its extensive investigations, surveys, and studies concluded that regional development of the Delaware River Basin is feasible, advisable, and urgently needed; and has recommended that an interstate compact with Federal participation be consummated to this end; and

Whereas the Congress of the United States and the executive branch of the Government have recognized the national interest in the Delaware River Basin by authorizing and directing the Corps of Engineers, Department of the Army, to make a comprehensive survey and report on the water and related resources of the Delaware River Basin, enlisting the technical aid and planning participation of many Federal, State, and municipal agencies dealing with the waters of the basin, and in particular the Federal Departments of Agriculture, Commerce, Health, Education, and Welfare, and Interior, and the Federal Power Commission; and

Whereas some twenty-two million people of the United States at present live and work in the region of the Delaware River Basin and its environs, and the government, employment, industry, and economic development of the entire region and the health, safety, and general welfare of its population are and will continue to be vitally affected by the use, conservation, management, and control of the water and related resources of the Delaware River Basin; and

Whereas demands upon the waters and related resources of the basin are expected to mount rapidly because of the anticipated increase in the population of the region projected to reach thirty million by 1980 and forty million by 2010, and because of the anticipated increase in industrial growth projected to double by 1980; and

Whereas water resources planning and development is technical, complex, and expensive, and has often required fifteen to twenty years from the conception to the completion of a large dam and reservoir; and

Whereas the public interest requires that facilities must be ready and operative when needed, to avoid the catastrophe of unexpected floods or prolonged drought, and for other purposes; and

Whereas the Delaware River Basin Advisory Committee, a temporary body constituted by the Governors of the four basin States and the mayors of the cities of New York and Philadelphia, has prepared a draft of an interstate-Federal compact for the creation of a basin agency, and the signatory parties desire to effectuate the purposes thereof: Now therefore

Be it enacted by the Senate and House of Representatives of the United States of America in Congress assembled, That the United States hereby consents to, and joins the States of Delaware, New Jersey, and New York and the Commonwealth of Pennsylvania in, the following compact:

ARTICLE 1

SHORT TITLE, DEFINITIONS, PURPOSE AND LIMITATIONS

Section 1.1 Short title. This Act shall be known and may be cited as the Delaware River Basin Compact.

1.2 Definitions. For the purposes of this compact, and of any supplemental or concurring legislation enacted pursuant thereto, except as may be otherwise required by the context:

(a) "Basin" shall mean the area of drainage into the Delaware River and its tributaries, including Delaware Bay;

(b) "Commission" shall mean the Delaware River Basin Commission created and constituted by this compact;

*

*

*

ARTICLE 2

ORGANIZATION AND AREA

Section 2.1 Commission Created. The Delaware River Basin Commission is hereby created as a body politic and corporate, with succession for the duration of this compact, as an agency and instrumentality of the governments of the respective signatory parties.

2.2 Commission Membership. The commission shall consist of the Governors of the signatory states, ex officio, and one commissioner to be appointed by the President of the United States to serve during the term of office of the President.

* * *

Article 15

* * *

EFFECTUATION

15.2 (a) The President is authorized to take such action as may be necessary and proper, in his discretion, to effectuate the Compact and the initial organization and operation of the Commission thereunder.

(b) Executive departments and other agencies of the executive branch of the Federal Government shall cooperate with and furnish appropriate assistance to the United States member. Such assistance shall include the furnishing of services and facilities and may include the detailing of personnel to the United States member. Appropriations are hereby authorized as necessary for the carrying out of the functions of the United States member, including appropriations for the employment of personnel by the United States member.

15.3 Effective Date: This Act shall take effect immediately.

Approved September 27, 1961.

Public Law 87-874

AN ACT

Authorizing the construction, repair, and preservation of certain public works on rivers and harbors for navigation, flood control, and for other purposes.

* * *

TITLE II—FLOOD CONTROL

Flood Control
Act of 1962.

49 Stat. 1571.
33 USC 701c.
52 Stat. 1215.
33 USC 701c-1.

SEC. 201. Section 3 of the Act approved June 22, 1936 (Public Law Numbered 738, Seventy-fourth Congress), as amended by section 2 of the Act approved June 28, 1938 (Public Law Numbered 761, Seventy-fifth Congress), shall apply to all works authorized in this title except that for any channel improvement or channel rectification project, provisions (a), (b), and (c) of section 3 of said Act of June 22, 1936, shall apply thereto, and except as otherwise provided by law: *Provided*, That the authorization for any flood control project herein adopted requiring local cooperation shall expire five years from the date on which local interests are notified in writing by the Department of the Army of the requirements of local cooperation, unless said interests shall within said time furnish assurances satisfactory to the Secretary of the Army that the required cooperation will be furnished.

58 Stat. 887.
33 USC 701-1.

SEC. 202. The provisions of section 1 of the Act of December 22, 1944 (Public Law Numbered 534, Seventy-eighth Congress, second session), shall govern with respect to projects authorized in this Act, and the procedures therein set forth with respect to plans, proposals, or reports for works of improvement for navigation or flood control and for irrigation and purposes incidental thereto shall apply as if herein set forth in full.

Navigation im-
provement proj-
ects.
Authorization.

SEC. 203. The following works of improvement for the benefit of navigation and the control of destructive floodwaters and other purposes are hereby adopted and authorized to be prosecuted under the direction of the Secretary of the Army and the supervision of the Chief of Engineers in accordance with the plans in the respective reports hereinafter designated and subject to the conditions set forth therein: *Provided*, That the necessary plans, specifications, and preliminary work may be prosecuted on any project authorized in this title with funds from appropriations hereafter made for flood control so as to be ready for rapid inauguration of a construction program: *Provided further*, That the projects authorized herein shall be initiated as expeditiously and prosecuted as vigorously as may be consistent with budgetary requirements: *And provided further*, That penstocks and other similar facilities adapted to possible future use in the development of hydroelectric power shall be installed in any dam authorized in this Act for construction by the Department of the Army when approved by the Secretary of the Army on the recommendation of the Chief of Engineers and the Federal Power Commission.

* * *

DELAWARE RIVER BASIN

The project for the comprehensive development of the Delaware River Basin, New York, New Jersey, Pennsylvania, and Delaware, is hereby authorized substantially in accordance with the recommendations of the Chief of Engineers, in House Document Numbered 522, Eighty-seventh Congress, at an estimated cost of \$192,400,000.

* * *

SEC. 207. Section 4 of the Act entitled "An Act authorizing the construction of certain public works on rivers and harbors for flood control, and for other purposes", approved December 22, 1944, as amended by section 4 of the Flood Control Act of July 24, 1946, and by section 209 of the Flood Control Act of 1954, is hereby further amended to read as follows:

Public park and recreational facilities.

68 Stat. 1266.
16 USC 460d.

"SEC. 4. The Chief of Engineers, under the supervision of the Secretary of the Army, is authorized to construct, maintain, and operate public park and recreational facilities at water resource development projects under the control of the Department of the Army, to permit the construction of such facilities by local interests (particularly those to be operated and maintained by such interests), and to permit the maintenance and operation of such facilities by local interests. The Secretary of the Army is also authorized to grant leases of lands, including structures or facilities thereon, at water resource development projects for such periods, and upon such terms and for such purposes as he may deem reasonable in the public interest: *Provided*, That leases to nonprofit organizations for park or recreational purposes may be granted at reduced or nominal considerations in recognition of the public service to be rendered in utilizing the leased premises: *Provided further*, That preference shall be given to Federal, State, or local governmental agencies, and licenses or leases where appropriate, may be granted without monetary considerations, to such agencies for the use of all or any portion of a project area for any public purpose, when the Secretary of the Army determines such action to be in the public interest, and for such periods of time and upon such conditions as he may find advisable: *And provided further*, That in any such lease or license to a Federal, State, or local governmental agency which involves lands to be utilized for the development and conservation of fish and wildlife, forests, and other natural resources, the licensee or lessee may be authorized to cut timber and harvest crops as may be necessary to further such beneficial uses and to collect and utilize the proceeds of any sales of timber and crops in the development, conservation, maintenance, and utilization of such lands. Any balance of proceeds not so utilized shall be paid to the United States at such time or times as the Secretary of the Army may determine appropriate. The water areas of all such projects shall be open to public use generally, without charge, for boating, swimming, bathing, fishing, and other recreational purposes, and ready access to and exit from such areas along the shores of such projects shall be maintained for general public use, when such use is determined by the Secretary of the Army not to be contrary to the public interest, all under such rules and regulations as the Secretary of the Army may deem necessary. No use of any area to which this section applies shall be permitted which is inconsistent with the laws for the protection of fish and game of the State in which such area is situated. All moneys received by the United States for leases or privileges shall be deposited in the Treasury of the United States as miscellaneous receipts."

Public use of water areas.

Protection of fish and game.

UNITED STATES CODE, TITLE 16 – CONSERVATION

SUBCHAPTER LXXIII—DELAWARE WATER GAP NATIONAL RECREATION AREA

SUBCHAPTER REFERRED TO IN OTHER SECTIONS

This subchapter is referred to in section 1274 of this title.

§ 460o. Establishment of area; statement of purposes

In order to further the purposes of the joint resolution approved September 27, 1961 (re Delaware River Basin compact; 75 Stat. 688), and to provide in a manner coordinated with the other purposes of the Tocks Island Reservoir project, for public outdoor recreation use and enjoyment of the proposed Tocks Island Reservoir and lands adjacent thereto by the people of the United States and for preservation of the scenic, scientific, and historic features contributing to public enjoyment of such lands and waters, the Secretary of the Interior is authorized, as herein provided, to establish and administer the Delaware Water Gap National Recreation Area, hereinafter referred to as the "area", as part of the Tocks Island Reservoir project, hereinafter referred to as "the project".

(Pub. L. 89-158, § 1, Sept. 1, 1965, 79 Stat. 612.)

REFERENCES IN TEXT

The joint resolution approved September 27, 1961, referred to in text, is Pub. L. 87-328, which was not classified to the Code.

§ 460o-1. Acquisition of lands

- (a) Authority of Secretary of Army; transfer of jurisdiction over lands to Secretary of the Interior; authority of such Secretary; retention of use and occupancy rights; termination and transfer of authority and funds; acquisition priorities

The Secretary of the Army is authorized and directed to acquire, by such means as he may deem to be in the public interest, and as a part of his acquisition of properties for the project, lands and interests therein within the boundaries of the area, as generally depicted on the drawing entitled "Proposed Tocks Island National Recreation Area" dated and numbered September 1962, NRA-TI-7100, which drawing is on file in the Office of the National Park Service, Department of the Interior. In acquiring these lands, the Secretary of the Army may utilize such statutory authorities as are available to him for the acquisition of project lands: *Provided*, That the Secretary of the Army shall acquire no lands or interests in land by exchange for lands or interests in land in Federal ownership unless the latter are in the States of Pennsylvania, New Jersey, or New York. Periodically, and as soon as practicable after such lands and interests within the area are acquired, the Secretary of the Army shall transfer jurisdiction thereof to the Secretary of the Interior for the purposes of this subchapter. Beginning on November 10, 1978, the Secretary of the Interior is authorized to acquire for purposes of the recreation area established under this subchapter all lands and interests therein within the exterior boundaries of the area depicted on the drawing referred to

in this subsection (including any lands within such exterior boundaries designated for acquisition by the Secretary of the Army in connection with the project referred to in this subsection). In exercising such authority, the Secretary of the Interior may permit the retention of rights of use and occupancy in the same manner as provided in the case of acquisitions by the Secretary of the Army under subsection (d) of this section. On November 10, 1978, the acquisition authorities of any other Federal agency contained in this subsection shall terminate and the head of any other Federal agency shall transfer to the Secretary of the Interior jurisdiction over all lands and interests therein acquired by said agency under the authority of this subchapter, or any other authority of law which lands are within the exterior boundaries of the area depicted on the drawing referred to in this subsection. On November 10, 1978, all unexpended balances available to any other Federal agency for acquisition of land within the exterior boundaries referred to in the preceding sentence shall be transferred to the Secretary of the Interior to be used for such purposes. In carrying out his acquisition authority under this section the Secretary shall give priority to the following:

- (1) completion of acquisition of lands for which condemnation proceedings have been started pursuant to the authorization of the project referred to in this subsection;
- (2) acquisition of lands of beneficial owners, not being a corporation, who in the judgment of the Secretary would suffer hardship if acquisition of their lands were delayed;
- (3) acquisition of lands on which, in the judgment of the Secretary, there is an imminent danger of development that would be incompatible with the purposes of the recreation area;
- (4) acquisition of lands of beneficial owners, not being a corporation, who are willing to sell their lands provided they are able to continue to use it for noncommercial residential purposes for a limited period of time which will not, in the judgment of the Secretary, unduly interfere with the development of public use facilities for such national recreation area, pursuant to the authorization for such area;
- (5) acquisition of scenic easements when, in the judgment of the Secretary, such easements are sufficient to carry out the purposes for which such national recreation area was authorized; and
- (6) acquisition of lands necessary to preserve the integrity of the recreation area.

(b) Omission of designated lands from area

Notwithstanding the provisions of subsection (a) of this section, the Secretary of the Interior is authorized, after consultation with appropriate public officials of the affected political subdivisions of the States of Pennsylvania or New Jersey, as the case may be, to designate not more than three hundred acres adjacent and contiguous to the Borough of Milford, Pennsylvania, and not more than one thousand acres in Sussex County, New Jersey, for omission from

the Delaware Valley National Recreation Area and the lands so designated shall not be acquired for said national recreation area under authority of this subchapter.

(c) Extension of boundaries; study and report to Congress

The Secretary of the Interior shall investigate, study, and report to the President and the Congress on the feasibility and usefulness of extending the boundaries of the Delaware Water Gap National Recreation Area to include, in whole or in part, that portion of Tocks Island Reservoir which lies upstream from the northern terminus of the national recreation area as shown on the map hereinbefore referred to and lands adjacent to said portion of said reservoir. No such extension of boundaries, however, shall be made until authorized by Act of Congress.

(d) Noncommercial residential occupancy for life or fixed term of years; price for property; "improved residential property" defined; waiver of relocation assistance benefits or rights

The beneficial owner, not being a corporation, of a freehold interest acquired before January 1, 1965, in improved residential property within the area to be acquired by the Secretary of the Army under authority of this subchapter, the continued use of which property for noncommercial residential purposes for a limited time will not, in the judgment of the Secretary of the Interior, unduly interfere with the development of public-use facilities for the national recreation area and will not, in the judgment of the Secretary of the Army, unduly interfere with the operation of the Tocks Island Reservoir project, may retain a right of use and occupancy of such property for noncommercial residential purposes for, as said owner may elect, either (i) a period terminating upon his death or the death of his spouse, whichever occurs later, or (ii) a term of not more than twenty-five years: *Provided*, That in no case shall the period or term for which such right of use and occupancy is retained extend beyond the term of the freehold interest acquired by the United States. The price payable to the owner of such property shall be reduced by an amount equal to the value of the right retained. As used in this subchapter "improved residential property" means a single-family year-round dwelling, the construction of which was begun before January 21, 1963, which dwelling serves as the owner's permanent place of abode at the time of its acquisition by the United States, together with not more than three acres of land on which the dwelling and appurtenant buildings are located which land the Secretary of the Interior or the Secretary of the Army, as the case may be, finds is reasonably necessary for the owner's continued use and occupancy of the dwelling: *Provided*, further, That whenever an owner of property elects to retain a right of use and occupancy pursuant to this subchapter, such owner shall be deemed to have waived any benefits or rights under the Uniform Relocation Assistance and Real Property Acquisition Policies Act of 1970 [42 U.S.C. 4601 et seq.].

(Pub. L. 89-158, § 2, Sept. 1, 1965, 79 Stat. 612; Pub. L. 92-575, § 2, Oct. 27, 1972, 86 Stat. 1250; Pub. L. 95-625, title III, § 316, Nov. 10, 1978, 92 Stat. 3483.)

REFERENCES IN TEXT

The Uniform Relocation Assistance and Real Property Acquisition Policies Act of 1970, referred to in subsec. (d), is Pub. L. 91-646, Jan. 2, 1971, 84 Stat. 1894, as amended, which is classified generally to chapter 61 (§ 4601 et seq.) of Title 42, The Public Health and Welfare. For complete classification of this Act to the Code, see Short Title note set out under section 4601 of Title 42 and Tables.

AMENDMENTS

1978—Subsec. (a). Pub. L. 95-625 authorized acquisition of lands within the exterior boundaries of the area by the Secretary of the Interior, retention of use and occupancy rights, termination of Federal agency authority over lands and transfer of authority and funds to the Secretary of the Interior, and prescribed acquisition priorities for the Secretary of the Interior.

1972—Subsec. (d). Pub. L. 92-575 provided for waiver of benefits or rights under the Uniform Relocation Assistance and Real Property Acquisition Policies Act of 1970, upon election to retain right of use and occupancy pursuant to this subchapter.

SECTION REFERRED TO IN OTHER SECTIONS

This section is referred to in sections 460a-2, 460a-7 of this title.

§ 460a-2. Establishment of area

(a) Publication in Federal Register; description of boundaries; administration of transferred lands and waters

As soon as practicable after September 1, 1965, and following the transfer to the Secretary of the Interior by the Secretary of the Army of jurisdiction over those lands and interests therein within the boundary generally depicted on the drawing described in section 460a-1 of this title which, in the opinion of the Secretary of the Interior, constitute an efficiently administrable unit, the Secretary of the Interior shall declare establishment of the area by publication of notice thereof in the Federal Register. Such notice shall contain a detailed description of the boundaries of the area which shall encompass, to the extent practicable, the lands and waters shown on said drawing. Prior to such establishment, the Secretary of the Interior shall administer such transferred lands and waters, consistent with the construction of the project, for purposes in contemplation of the establishment of the area pursuant to this subchapter.

(b) Adjustments in boundaries; publication in Federal Register; acquisition of additional lands; acreage limitations

The Secretary of the Interior may subsequently make adjustments in the boundary of the area by publication of the amended description thereof in the Federal Register and acquire, by such means as he may deem to be in the public interest, including an exchange of excluded for included lands or interests therein with or without the payment or receipt of money to equalize values, additional lands and interests therein included in the area by reason

of the boundary adjustment: *Provided*, That the area encompassed by such revised boundary shall not exceed the acreage included within the detailed boundary first described pursuant to this section.

(c) Continuance of existing uses

On lands acquired pursuant to this subchapter for recreation purposes, the Secretary of the Army, with the concurrence of the Secretary of the Interior, may permit the continuance of existing uses consistent with the purposes of this subchapter.

(Pub. L. 89-158, § 3, Sept. 1, 1965, 79 Stat. 613.)

§ 4600-3. Administration authorities for conservation, management, or disposal of natural resources; coordination of administrative responsibilities of the Secretary of the Interior and Secretary of the Army

In the administration of the area for the purposes of this subchapter, the Secretary of the Interior may utilize such statutory authorities relating to areas of the national park system and such statutory authorities otherwise available to him for the conservation, management, or disposal of vegetative, mineral, or fish or wildlife resources as he deems appropriate to carry out the purposes of this subchapter. To assure consistent and effective planning, development, and operation for all purposes of the project, the Secretary of the Interior and the Secretary of the Army shall coordinate the administration of their respective responsibilities in the project; and such administration shall be consistent with the joint resolution approved September 27, 1961 (re Delaware River Basin compact; 75 Stat. 688).

(Pub. L. 89-158, § 4, Sept. 1, 1965, 79 Stat. 613.)

SECTION REFERRED TO IN OTHER SECTIONS

This section is referred to in section 4600-4 of this title.

§ 4600-4. Land and water use management plan; adoption, implementation, and revision; provisions

In the administration of the area for the purposes of this subchapter, the Secretary of the Interior, subject to provisions of section 4600-3 of this title, shall adopt and implement, and may from time to time revise, a land and water use management plan, which shall include specific provision for, in order of priority—

(1) public outdoor recreation benefits;

(2) preservation of scenic, scientific, and historic features contributing to public enjoyment;

(3) such utilization of natural resources as in the judgment of the Secretary of the Interior is consistent with, and does not significantly impair, public recreation and protection of scenic, scientific, and historic features contributing to public enjoyment.

(Pub. L. 89-158, § 5, Sept. 1, 1965, 79 Stat. 614.)

§ 4600-5. Hunting and fishing

The Secretary of the Interior shall permit hunting and fishing on lands and waters under

his jurisdiction within the area in accordance with the applicable laws and regulations of the States concerned and of the United States. The Secretary of the Interior may designate zones where, and establish periods when, no hunting shall be permitted for reasons of public safety, wildlife management, administration, or public use and enjoyment not compatible with hunting, and may, in his plan for the area, provide areas for intensive fish and wildlife management, including public hunting and fishing, and shall issue appropriate regulations after consultation with appropriate officials of the States concerned. The Secretary of the Interior shall encourage such officials to adopt uniform regulations applicable to the whole of the Delaware Water Gap National Recreation Area.

(Pub. L. 89-158, § 6, Sept. 1, 1965, 79 Stat. 614.)

§ 4600-6. Civil and criminal jurisdiction and taxing power of the State

Nothing in this subchapter shall be construed to deprive any State or political subdivision thereof, of its right to exercise civil and criminal jurisdiction over the lands and waters within the area or of its right to tax persons, corporations, franchises, or property on the lands and waters included in the area.

(Pub. L. 89-158, § 7, Sept. 1, 1965, 79 Stat. 614.)

§ 4600-7. Authorization of appropriations

There are hereby authorized to be appropriated to the Secretary of the Interior for the acquisition of lands and interests in land pursuant to the provisions of section 4600-1 of this title and for expenses incident thereto not more than \$65,000,000 which moneys shall be transferred to the Secretary of the Army. There are also authorized to be appropriated not more than \$18,200,000 for the cost of installing and constructing recreation facilities on the lands and interests in lands so acquired. The amounts herein authorized to be appropriated are supplemental to those authorized to be appropriated for the Tocks Island project and related facilities by the Flood Control Act of 1962 (76 Stat. 1182).

(Pub. L. 89-158, § 8, Sept. 1, 1965, 79 Stat. 614; Pub. L. 92-575, § 1, Oct. 27, 1972, 86 Stat. 1250.)

REFERENCES IN TEXT

The amounts authorized to be appropriated for the Tocks Island project and related facilities by the Flood Control Act of 1962, referred to in text, appear at 76 Stat. 1182, and were not classified to the Code. The Flood Control Act of 1962 is Title II of Pub. L. 87-874, Oct. 23, 1962, 76 Stat. 1173. For complete classification of this Act to the Code, see Tables.

AMENDMENTS

1972—Pub. L. 92-575 increased appropriations authorization to \$65,000,000 from \$37,412,000.

Chapter 28 — Wild and Scenic Rivers

* * *

Sec. 1274. Component rivers and adjacent lands

(20) DELAWARE, NEW YORK, PENNSYLVANIA, AND NEW JERSEY—The segment from the point where the river crosses the northern boundary of the Delaware Water Gap National Recreation Area to the point where the river crosses the southern boundary of such recreation area; to be administered by the Secretary of the Interior. For purposes of carrying out this chapter with respect to the river designated by this paragraph, there are authorized to be appropriated such sums as may be necessary. Action required to be taken under subsection (b) of this section with respect to such segment shall be taken within one year from November 10, 1978, except that, with respect to such segment, in lieu of the boundaries provided for in such subsection (b), the boundaries shall be the banks of the river. Any visitors facilities established for purposes of use and enjoyment of the river under the authority of the Act establishing the Delaware Water Gap National Recreation Area [16 U.S.C. 460o et seq.] shall be compatible with the purposes of this chapter and shall be located at an appropriate distance from the river.



APPENDIX B: MANAGEMENT OBJECTIVES

Management objectives are based on legislative mandates and management policies of the National Park Service, as well as the existing features of the recreation area. They describe the conditions that should be achieved in the national recreation area over the long term, although not necessarily within the life of the approved General Management Plan. The objectives will provide a standard by which to measure progress on the individual actions proposed by the plan.

Cooperation

Participate with other federal, state, and local agencies, private organizations and interests, and members of the public to ensure (1) that land uses in the vicinity of the national recreation area are compatible with long-term perpetuation of national recreation area values, (2) that recreational opportunities, visitor services, and public facilities in the area and its vicinity are complementary and that they efficiently serve the needs of visitors and regional residents, and (3) that structures and sites of cultural significance within the region are preserved and interpreted.

Interpretation

Foster a public understanding and appreciation of the natural and cultural processes that have shaped and are continuing to shape the Delaware River valley.

Make the public aware of available recreational opportunities, interpretive programs, visitor services, and necessary safety considerations.

Visitor Use

Provide the widest possible range of recreational opportunities that are dispersed throughout the area and in a way that prevents resource degradation or loss as a result of use.

Ensure that recreational opportunities are available to all people, without endangering the health or safety of any, with a minimum of conflicts between user groups.

Resource Management

Protect and perpetuate natural resources, including endangered or threatened species and their habitats; ensure the survival of native plant and animal species, and compatible game species, and the continued contribution of these species to the recreational enjoyment of the area.

Protect and preserve the broad cultural patterns of human occupation and scenic diversity of the area, as they reflect man's interaction with the natural resources of the Delaware Valley; manage cultural resources and patterns in a way that is compatible with recreation area values, preserves their significant qualities, provides a living exhibit and interpretive demonstration, and maintains the integrity of the resources and their settings.

Research

Secure adequate information on natural resources, cultural resources, visitor use, and recreational values to allow for the best possible management of the recreation area.

Land Protection

Assemble and protect a land base that allows for efficient management operations and that ensures the long-term perpetuation of public access to the river and other recreational sites and opportunities (e.g., hunting and fishing); the perpetuation of the integrity of all scenic, scientific, and historic resources; and the perpetuation of water quality.

APPENDIX C: SUMMARY OF PUBLIC COMMENTS ON THE DRAFT GENERAL MANAGEMENT PLAN / ENVIRONMENTAL ASSESSMENT

The Draft General Management Plan / Environmental Assessment was on public review from June 15 to October 15, 1986. Over 1,400 copies were distributed to government officials, groups, and individuals on the recreation area's mailing list, as well as to additional individuals by request.

Seven open-house meetings were held July 23-26, 1986, at four locations in the recreation area. These were informal discussion meetings where members of the planning team and recreation area staff were available to answer questions, explain the plan, and accept comments from all interested persons and organizations. Approximately 300 individuals attended the seven sessions, of whom 177 signed attendance registration forms. In addition recreation area staff members made presentations on request to local boards of supervisors, homeowner associations (400 attended one meeting), sportsmen's groups, and other special interest groups.

A total of 1,039 responses were received during the 120-day review period. Of these 955 were from individuals, 55 were from representatives and members of groups and organizations, and 29 were from state and local government officials. Seven inquiries about the plan were received from members of Congress. A total of 450 comments were received from New Jersey, 411 from Pennsylvania, 78 from New York, and 43 from other locations. A total of 316 comments were received from Pennsylvania cities and towns in the area of Delaware Water Gap (including 225 from Bushkill, 35 from East Stroudsburg, 31 from Stroudsburg, 9 from Milford, and 6 from Dingmans Ferry) and 153 from New Jersey cities and towns (including 97 from Blairstown, 29 from Newton, 12 from Columbia, 7 from Branchville, and 6 from Stillwater).

The comments covered a wide range of interests and concerns for the preservation and use of the recreation area. Of the comments that indicated a preference for an alternative, 620 favored the continuation of existing conditions, with some development and improvement of facilities (alternative 1). The proposed plan was supported by 213, and only five commenters supported greater commercial development under alternative 2. The opposition to alternative 2 was mostly due to the anticipated impact that development could have on the natural environment and the increased number of people it would draw to the region. The protection of the natural environment was of primary importance to the majority of commenters, regardless of which alternative they supported. Support was received for additional access for activities such as river use, hiking, sight-seeing, hunting, fishing, and visiting historic structures and recreation sites. Many commenters stated that more visitors would affect roads and emergency services, as well as the character of the respective communities.

The following major topics of concern are listed in the order they were presented in the Draft General Management Plan / Environmental Assessment. For each topic the concerns and issues raised by the commenters are summarized, followed by a list indicating the range and number of comments on that particular topic.

Scenic Landscape Management

Many commenters thought of scenic landscape management in terms of the landscape as seen from near the river. Comments fell into two categories: Let the recreation area go natural, and keep it as it is. Commenters were strongly opposed to lumbering, logging, and clear-cutting for the purpose of landscape management. Some supported timber management for other reasons, such as scenic variety and wildlife habitat. Agricultural uses were very strongly supported.

Have more forested areas	6
Keep some land open by farming	3
Maintain the landscape as is	15
Keep the area natural	12
Inventory outstanding natural features	2
Keep areas for wildlife and scenery	2
Ensure that the landscape plan complies with all state hunting laws	1

Natural Resources

The majority of commenters addressed the need to leave the recreation area in a natural state. Mining was opposed by all commenters. Timber cutting was not supported as a commercial activity, but it was acceptable for improving wildlife habitat. Continued farming practices under the agricultural permit system received support, but several commenters stated it was not needed. General concern over impacts on water quality was expressed in relation to the possible increase in visitation and activities in the recreation area. Some commenters said more visitors would increase trash.

Continue protection of natural resources by controlling farming and forestry practices and encouraging native species and habitat	16
Make the area a black bear sanctuary	1
Support habitat improvement programs for turkeys	1
Eliminate developments in wetlands	2
Focus on the protection of the larger ecosystem	1
Do not permit mining	6
Allow no commercial cutting of timber	10
Allow selective timber cutting	3
Allow timber harvesting within a range of percentages (50%-10%)	3
Continue agricultural practices	15

Eliminate agricultural practices	2
Make crops more diverse	1
Protect the watershed from pollution	7

Cultural Resources

Cultural resource actions proposed in the draft plan were generally supported in all comments but one. The preservation and protection of historic buildings and sites as well as farms and village settings were future actions specifically described as necessary.

Preserve historic buildings	12
Care for artifacts and museum pieces	1
Open historic buildings to tours	1
Don't waste money preserving "historic" buildings	1
Preserve historic farms, fields, and communities such as Millbrook Village	2

Interpretation

Continuing and improving interpretive activities in the recreation area was the major focus of comments. Specific areas and types of programs were mentioned in each comment. General support for interpretive programs was received.

Develop an interpretive program/activity in specific places	6
Develop more river interpretive programs	1
Concentrate development at educational facilities	3

Recreational Uses

The largest number of comments related to recreational activities. Most comments focused on specific activities, as well as their regulation and accessibility to frequent users of the area. Powerboating, soaring with gliders, and hang-gliding were mentioned most. Snowmobiling, cross-country skiing, hiking, and hunting were also listed.

Do not allow speedboats; keep a 5-mph limit on the river	27
Do not restrict the river speed limit to 5 mph; provide opportunities for waterskiing	52
Designate a landing area for gliders	88
Expand/maintain hang-gliding areas	12
Do not allow snowmobiling	9
Increase cross-country ski trails	3
Increase hiking activities	3
Maintain hunting activities	2

Visitation (Number of Visits)

Many commenters were concerned about increasing the number of visitors to the recreation area. Specific comments related to anticipated increases and to other actions that could cause an increase in visits.

Increased visitation would damage the area	5
Increased use would strain local fire, rescue, and police departments	3
Increased use would affect the road system	2
The number of people should be reduced by limiting the size of facilities	1

Administration/Operations

All comments in this category related to the existing operation of the recreation area, especially NPS patrols by rangers.

Provide more rangers to patrol the area	10
Increase the staff as the number of visitors increases	3

Development

Comments on development varied from doing nothing to building some new facilities. The majority of commenters preferred that existing facilities not be made larger, but some said a few new small improvements are warranted. Commercial development and large-scale NPS development received little support.

Do not add many new developments	16
Increase development in the recreation area	3
Keep commercial development out	21
Make more facilities handicap accessible	2
Build more comfort stations and trash containers	2
Avoid the construction of buildings in floodplains	2

River Access and Beach Development

Comments on river access and beach development covered a wide range of possible actions described in all three alternatives. Specific suggestions ranged from adding new facilities to removing development of an existing area. Most commenters supported some increase in access for river activities.

Provide more boat/canoe access points	19
Move or scale down development of Sandyston Beach	5
Build Sandyston Beach	3

Delete new boat ramps	3
Limit river access	8
Do not enlarge Milford Beach	1
Provide new swimming areas	6
Do not provide new swimming areas	5
Increased activities would affect the natural setting and cause crowding	5

Camping

Additional canoe, backcountry, and developed camping facilities were supported by the majority of commenters. Concession operations received little support. Dispersed camping along trails was described as a good way to provide a new activity for hikers, horseback riders, and other recreationists.

Eliminate concessioner campgrounds	13
Allow concessioner campgrounds for family camping	3
Support backcountry camping	13
Provide additional canoe campsites	7

Trails

Most commenters expressed support for the addition or improvement of hiking, bicycling, and horseback-riding trails. The restrictions suggested for their placement related to not disturbing natural areas and staying away from the Appalachian Trail.

Construct more bicycle trails	11
Expand the hiking trail system	20
Construct horseback-riding trails	8
Do not construct new trails	1
Do not allow snowmobiles, dirt bikes, and all-terrain vehicles in the recreation area	2

Roads

Comments received on roads mostly requested increased maintenance and improvements of existing roads. Many commenters requested that no roads be closed and that some improvements be made for access points currently used by local residents and recreation area visitors.

Close some roads	5
Do not close any roads	8
Improve inadequate roads	6
Improve existing roads	11
Improve signs	4
Do not increase traffic on roads	14

Food Service and Concessions

Specific comments on this topic related to private commercial activities besides food service facilities. The majority of comments did not support the inclusion of any new concessioner facilities in the recreation area. Some specific activities, such as bed-and-breakfast inns and small food service facilities at specific locations, did receive favorable comments.

Do not encourage concessioner facilities	13
Keep commercial enterprises small	2
Use historic sites as bed-and-breakfast inns	1

Environmental Consequences: Local Economy

Most of the comments on the economic impacts of implementing one of the alternatives were from local residents concerned about the projected increase in visitors to the recreation area and the resulting effects on local roads and emergency services. Many commenters did not necessarily reject the proposal, but were reacting more to possible effects and the need to mitigate them. The majority of commenters stated that they wanted no increase in visitors to the region.

Roads around the park cannot handle traffic increases	16
Local towns cannot handle emergency services with an increase in visitors	11
An increase in visitors would cause increased local taxes to keep up with needed services	4
Burdens on local governments would increase on areas outside the recreation area	6

Environmental Consequences: Public Recreational Experiences

Comments related to hunting and fishing and the possible effects of the plan on these activities. The comments supported a continuation of existing activities, the improvement of wildlife and fish habitats through existing programs, and coordination of programs with state offices. Sportmen's groups responded favorably to the proposed plan.

Would prefer hunting and fishing over new development	1
Leave areas open to hunting as they are now	2
Reduce sport hunting	2
Increase stocking of fish	2
Keep all land open for hunting, fishing, and trapping	4

As a result of these comments, the general management plan has been revised. The changes are described briefly in the "Introduction" to this document.

APPENDIX D : COST ESTIMATE SUMMARY
(1985 dollars)

Facility Development	
National Park Service--	
Net Development Cost	27,123,000
Indirect Cost*	<u>15,189,000</u>
	42,312,000
Concessioner--	
Net Development Cost	10,374,000
Indirect Cost*	<u>5,810,000</u>
	16,184,000
Total--Gross Cost	58,496,000
Roads under Federal Jurisdiction	
Net Cost	20,077,000
Indirect Cost*	<u>11,243,000</u>
Total--Gross Cost	31,320,000
Trails	
Net Cost	5,961,000
Indirect Cost*	<u>3,338,000</u>
Total--Gross Cost	9,299,000
Historic Structures	
NPS Use	
Net Cost	2,468,500
Indirect Cost*	<u>1,382,500</u>
Total--Gross Cost	3,851,000
Lease or Other Use	
Net Cost	4,950,000
Indirect Cost*	<u>2,772,000</u>
Total--Gross Cost	7,722,000
Annual Operations	6,091,111

*Indirect costs cover surveys, design services, preparation of construction documents, contract award and administration, construction supervision, etc.

PLANNING TEAM AND CONSULTANTS

PLANNING TEAM

Delaware Water Gap National Recreation Area

Albert A. Hawkins, Superintendent
Richard G. Ring, Assistant Superintendent

Denver Service Center

Linda Romola, Outdoor Recreation/Cultural Resource Planner, Team Captain
Robert Rothweiler, Environmental Specialist
Michael J. Spratt, Transportation Planner
A. Whitfield Watkins, Outdoor Recreation Planner
Richard E. Wells, Planner/Landscape Architect

CONSULTANTS

Delaware Water Gap National Recreation Area

James Arnott, Chief Ranger
Warren Bielenberg, Chief of Interpretation
William Bock, Management Assistant
Phillip Campbell, District Ranger, New Jersey
Richard Gross, Park Ranger
Karl Merchant, Supervisory Park Ranger
William Sanders, District Ranger, Pennsylvania
Karl Theune, Park Ranger
Barbara Zwalley, Land Resources Officer

Denver Service Center

Ramon Borrás, Chief, Branch of Estimating
Russ Pishnery, Concessions Specialist

Mid-Atlantic Regional Office

David A. Kimball, Chief of Planning



As the nation's principal conservation agency, the Department of the Interior has responsibility for most of our nationally owned public lands and natural and cultural resources. This includes fostering wise use of our land and water resources, protecting our fish and wildlife, preserving the environmental and cultural values of our national parks and historical places, and providing for the enjoyment of life through outdoor recreation. The department assesses our energy and mineral resources and works to ensure that their development is in the best interests of all our people. The department also promotes the goals of the Take Pride in America campaign by encouraging stewardship and citizen responsibility for the public lands and promoting citizen participation in their care. The department also has a major responsibility for American Indian reservation communities and for people who live in island territories under U.S. administration.

Publication services were provided by the graphics and editorial staffs of the Denver Service Center.
NPS D-88A August 1989

U.S. DEPARTMENT OF THE INTERIOR
National Park Service
Delaware Water Gap National Recreation Area
Bushkill, PA 18324

OFFICIAL BUSINESS

Penalty for Private Use, \$300